

# UNEXPECTED

## DISCUSSION GUIDE

NORTHVIEW COMMUNITY CHURCH



Content



Care



Connection



Commission

## ANNOUNCEMENTS

- **Volunteer as a Tutor!** Our Punjabi Connection ministry is starting a tutoring program on February 8th. It will run on Mondays from 3-430pm, until June 14th. You do not need to speak Punjabi in order to volunteer. If you are interested or would like more information, please contact Nitu at [nharry@northview.org](mailto:nharry@northview.org).
- **Pre-Marriage Class** For couples who are seriously dating or engaged we are offering a pre-marriage class this coming February here at Northview's Downes Road Campus. For more details and to register check out our website, [northview.org](http://northview.org).
- **Employment Opportunity** Northview has an opening in our Discipleship Department for a Women's Ministry Administrative Assistant. For more information, please go to: [northview.org/employment](http://northview.org/employment)

## PRAYER REQUESTS

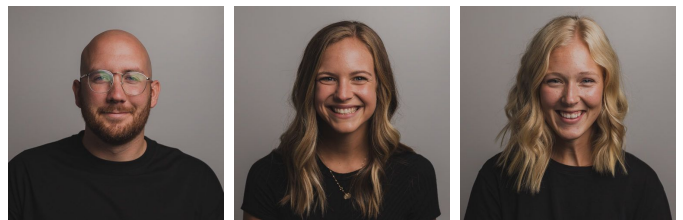
### MISSIONARY OF THE WEEK:

**Caleb and Raquel Enns** serving in Northview's Church Planter Residency as they prepare to church plant in Thailand.

**Justin and Lauren Pauls** serving with YWAM, in Nepal.

### MINISTRY OF THE WEEK:

#### High School Youth (NHSY)



Pray for our NHSY staff (Pastor Luke, Pastor Danae and Jessica) and our leaders; that the Lord would guide them and grant them creativity to connect with and teach youth in a meaningful way.

Pray for the high school students; pray against mental health challenges; pray that they would find peace and courage through the Word of God in this increasingly challenging season.

## LOOK

### Read Luke 3:15-20

1. What stands out to you from the passage?
2. What do you remember from the sermon?
3. What did you learn from this passage?

*Sermon Points Refresher:*

- *Know Your Place* (vv. 15-16)
- *Expect the Divide* (vv. 16-17)
- *Tell the Truth* (vv. 18-20)

## LEARN

### Read Luke 1:13-17, 76-79

1. (Reminder question from last week) What kind of a role was John to play for the people of Israel?

*He is to be a prophet who goes on ahead of Jesus to prepare the way.*

2. Focus on v. 15; Why did the people think John might be the messiah?

*He had not yet specifically proclaimed that he was preparing for them to one who was to come after him (Jesus). He speaks to them like the prophets in the Old Testament, who called Israel to repent.*

3. How does John respond?

*He clarifies that he is playing a preparatory role, and points to the one who will come after him.*

We might not be guilty of mistaking people for Jesus, but do we elevate spiritual leaders (pastors, elders, conference speakers) to a place that should belong only to Jesus? What does that look like in our world today? At our church?

### Read Luke 3:17

4. How does John characterize the result of the ministry that Jesus will do?

*Jesus does work that will be divisive (the winnowing image is one of separation, like the wheat being separated from the chaff)*

### Read Luke 2:34

5. How does Simeon's prophecy about Jesus compare to John's summary?

*Both point to the dual reactions that Jesus will have in response to his ministry.*

Why is this not the answer we give to the question "what did Jesus come to do?". What answers do we give instead? What is it about our context that causes us to tend to answer in the ways we do?

What are common reasons that cause people to negatively react to Jesus?

### Read Luke 3:18-20

5. What did John do that got him in trouble?

*He "reproved"/rebuked Herod for stealing his brother's wife.*

John was in the middle of a really effective and popular ministry that was getting him lots of notoriety. Why would he have bothered to speak up and risk angering his regional ruler?

*John knew that his mission did not depend upon his own winsomeness for effectiveness; he would be effective wherever he was so long as he was faithful to God, which included speaking against the obvious wickedness of powerful people.*

Why are we hesitant to speak up when we see wickedness? Injustice? Immorality?

## LIVE

**Faithful obedience to God requires an understanding of the role people play and the nature of what Jesus came to do.**

1. What are some ways you make the mission of the church about yourself?
2. In what ways are you prone to soften the work that Jesus did?
3. Take time to pray for your own response to the gospel; that you would not elevate yourself too highly, and that you would not avoid speaking the truth about Jesus for any reason.